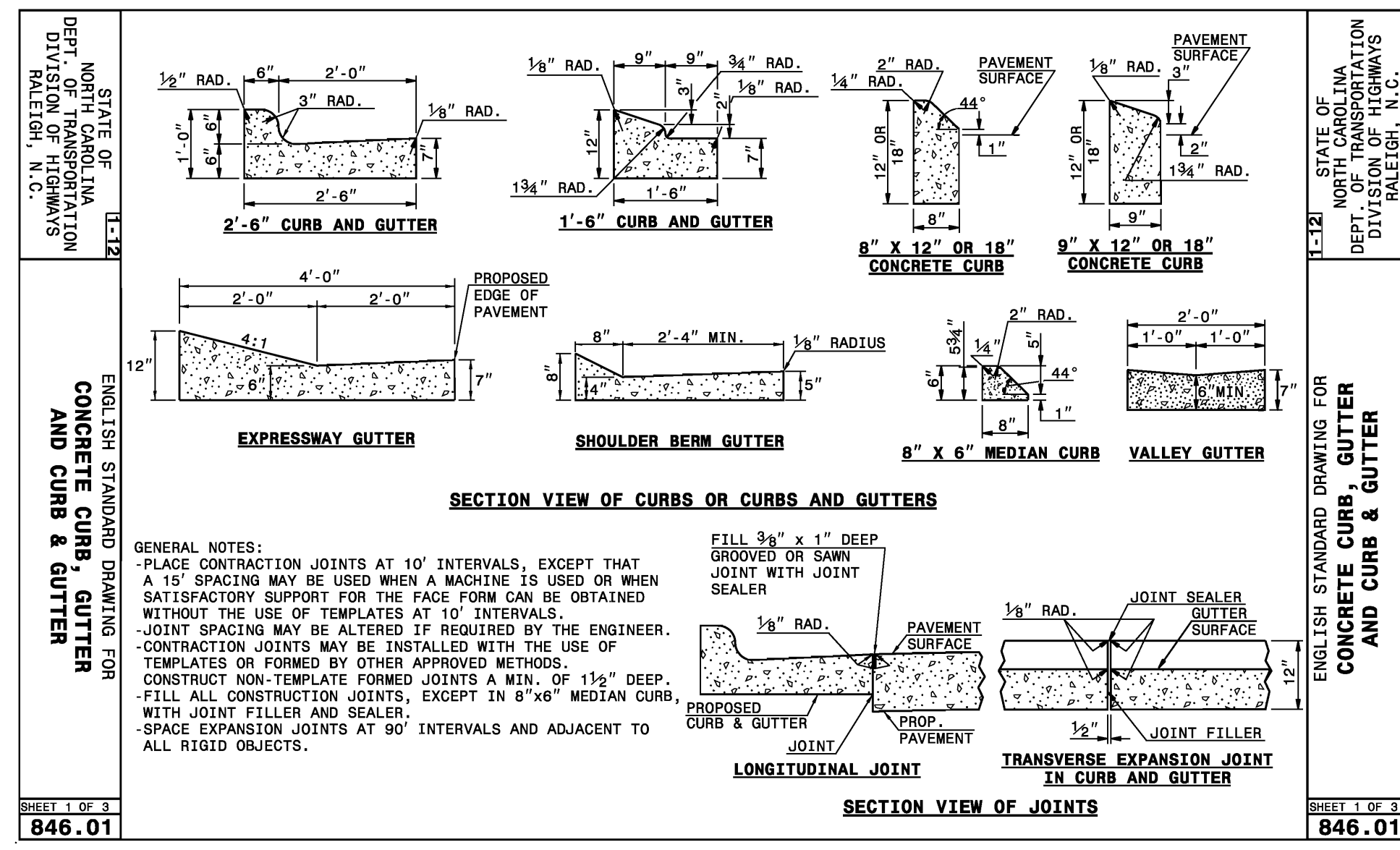
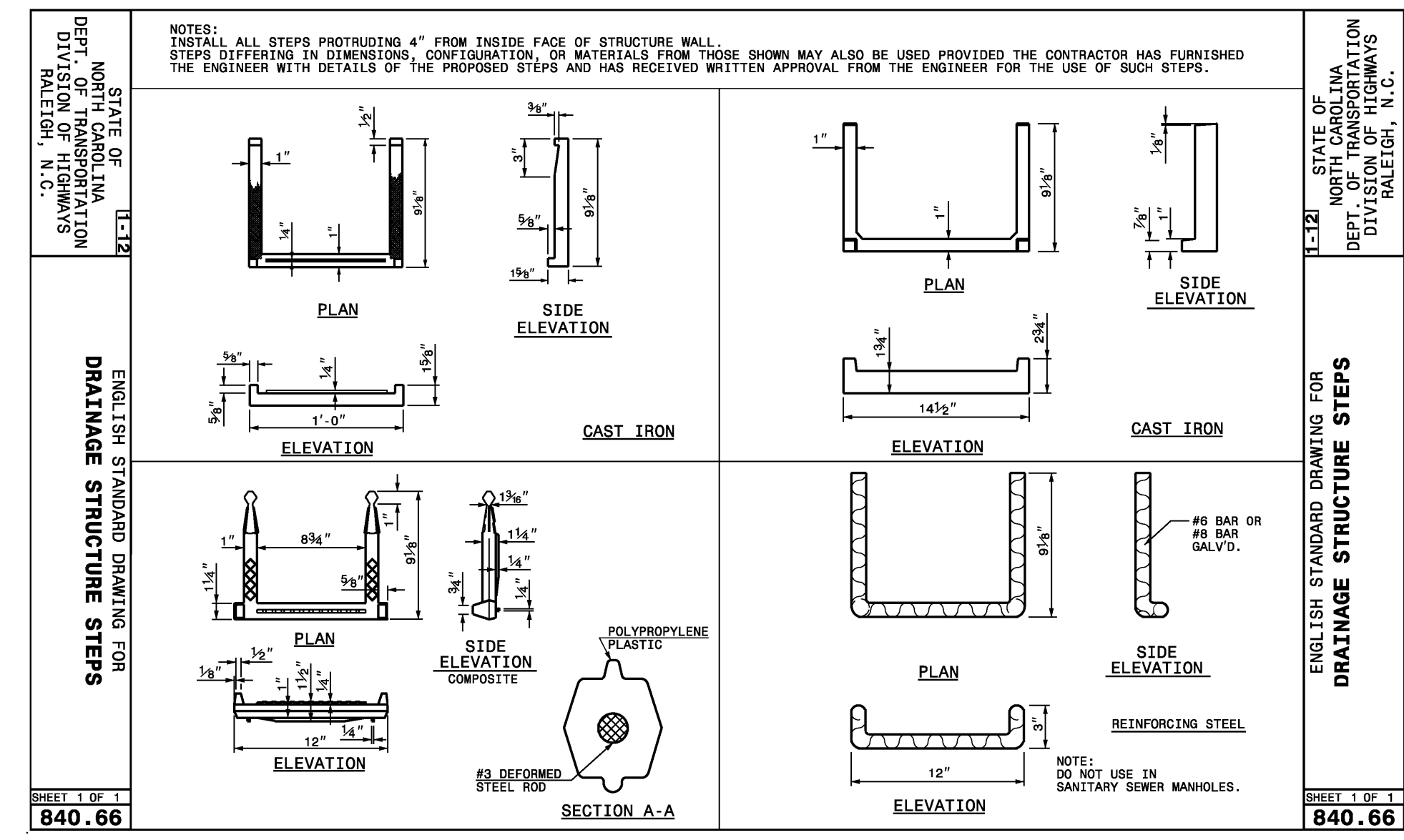
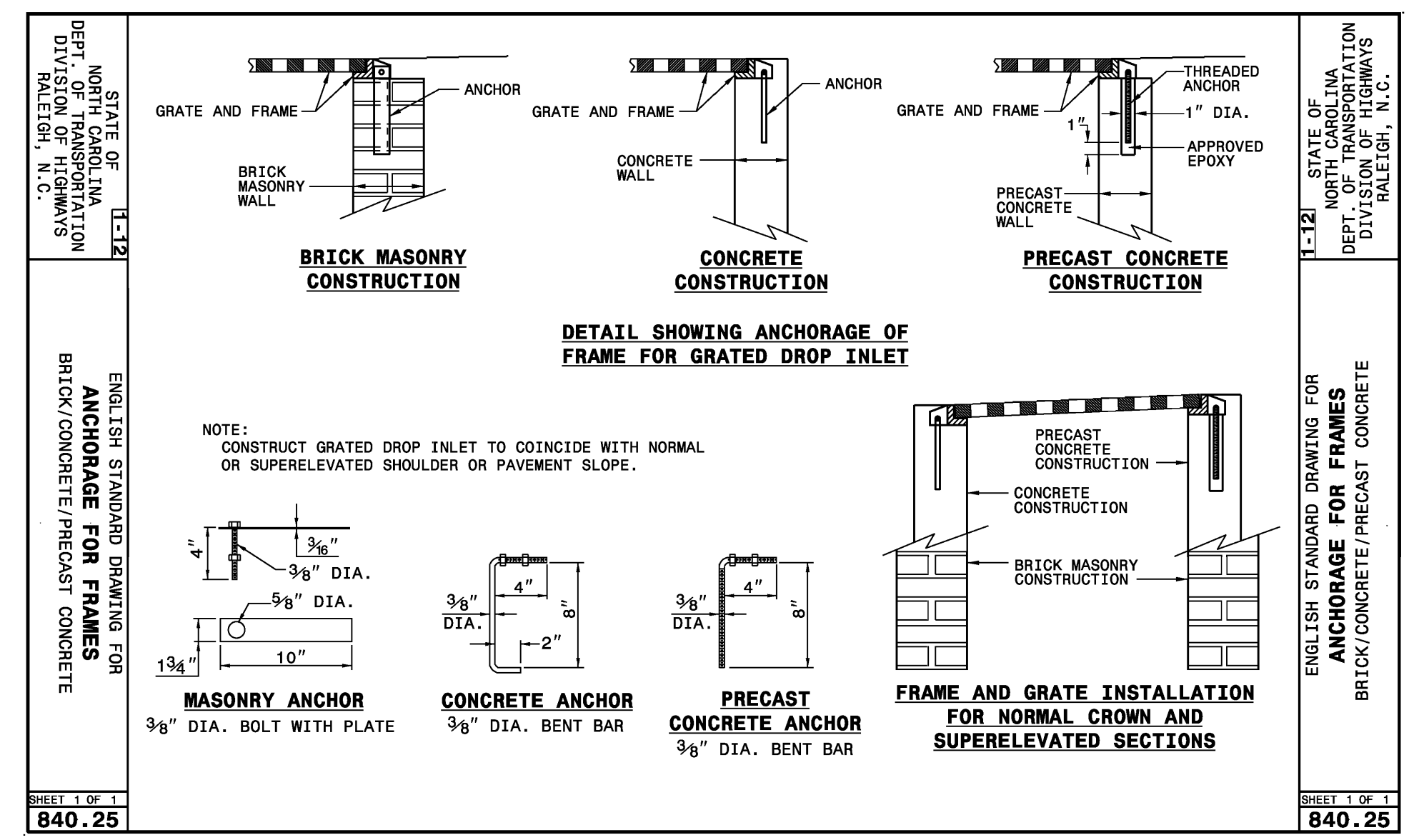
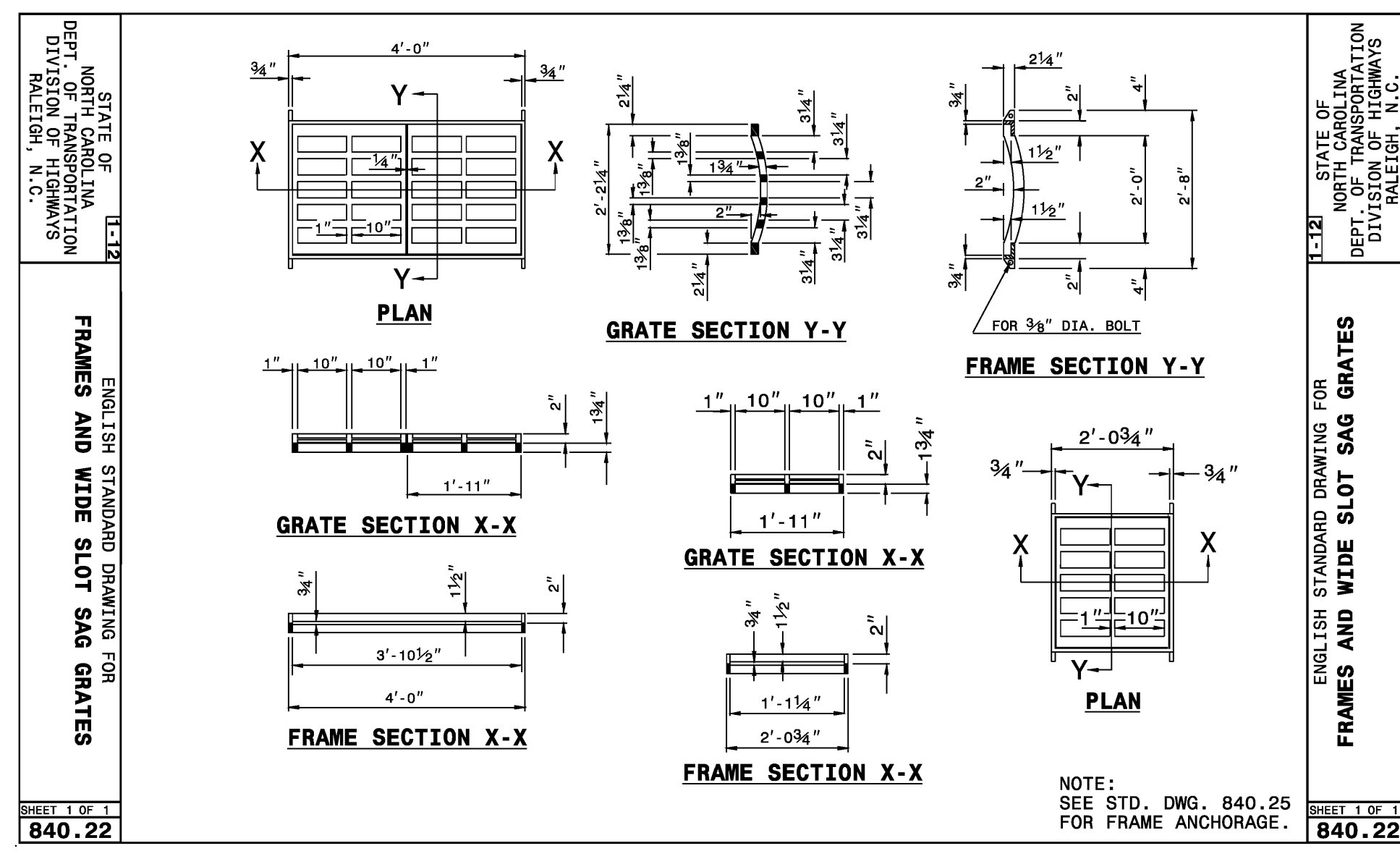
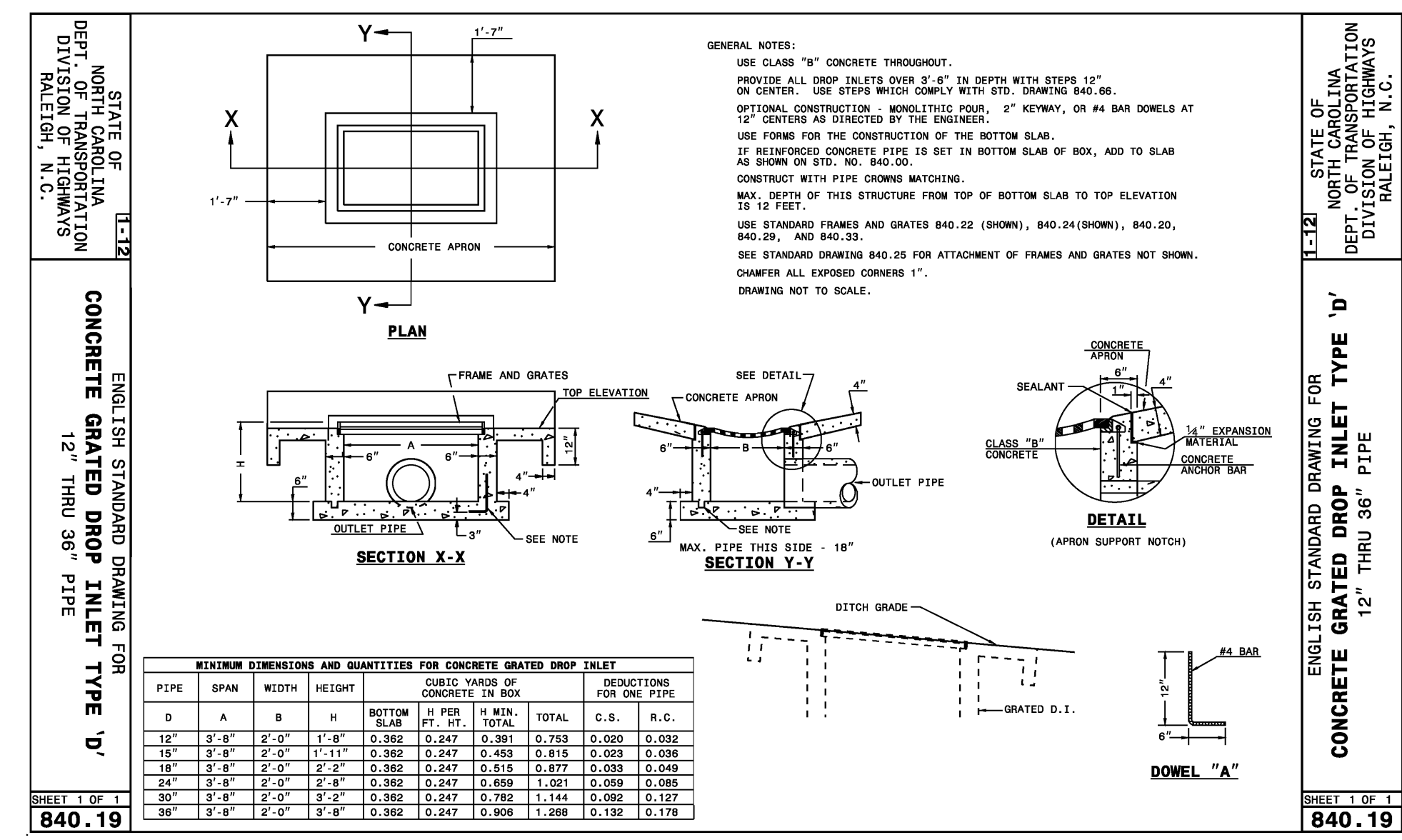
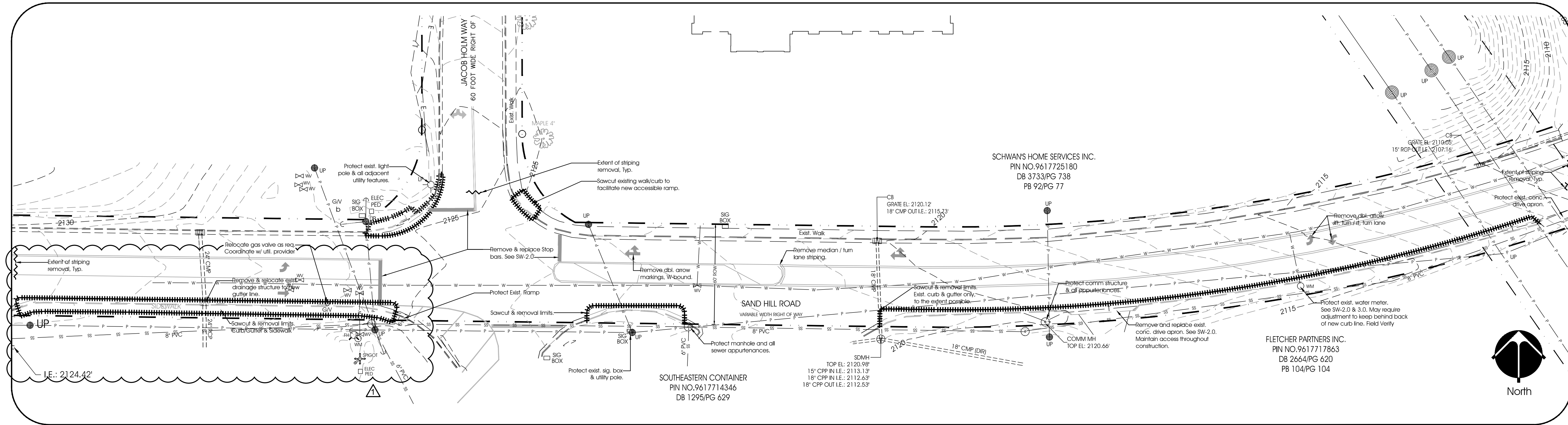


# TURN LANE ADDITION AT SANDHILL ROAD / JACOB HOLM WAY INTERSECTION



### SURVEYORS LEGEND

- PK/NL SET = PK NAIL SET
- OT/PP = OPEN TOP IRON PIN FOUND
- CM = CONCRETE MONUMENT
- FIRE HYDRANT
- RFB = REBAR FOUND
- CT/FP = CRIMPED TOP IRON PIN FOUND
- UP = UTILITY POLE
- SSMH = EXISTING SEWER MANHOLE
- MH = MANHOLE
- CP = CALCULATED POINT
- RBS = REBAR SET
- WV = WATER VALVE
- WM = WATER METER
- TREE: SIZE & SPECIES INDICATED
- ELEC PED = ELECTRIC PEDESTAL
- POB = POINT OF BEGINNING
- ROW = RIGHT OF WAY
- (G) = NC STATE PLANE GRID DISTANCE
- (H) = HORIZONTAL GROUND DISTANCE

REVISIONS:

No.	Description	Date
1	Sandhill Impr. W. of Int.	05/18/16

DRAWN BY: R. Daniel Hyatt  
 CHECKED BY: Mike Watson  
 DATE: 12/17/2015  
 NOVUS JOB NUMBER: ---

**NC ONE-CALL**  
 CALL BEFORE YOU DIG  
 1-800-632-4949

**Broadbooks Associates**  
 www.broadbooksapa.com

Scale: 1" = 30'

**NOVUS**  
 ASHEVILLE + CHARLESTON  
**BOWERS, ELLIS & WATSON**  
 ARCHITECTS

168 PATTON AVE.  
 ASHEVILLE, NC 28801  
 P: (828) 236-9992  
 www.novusa.com

**BUNCOMBE COUNTY SCHOOLS**  
 ELEVATING YOUNG MINDS

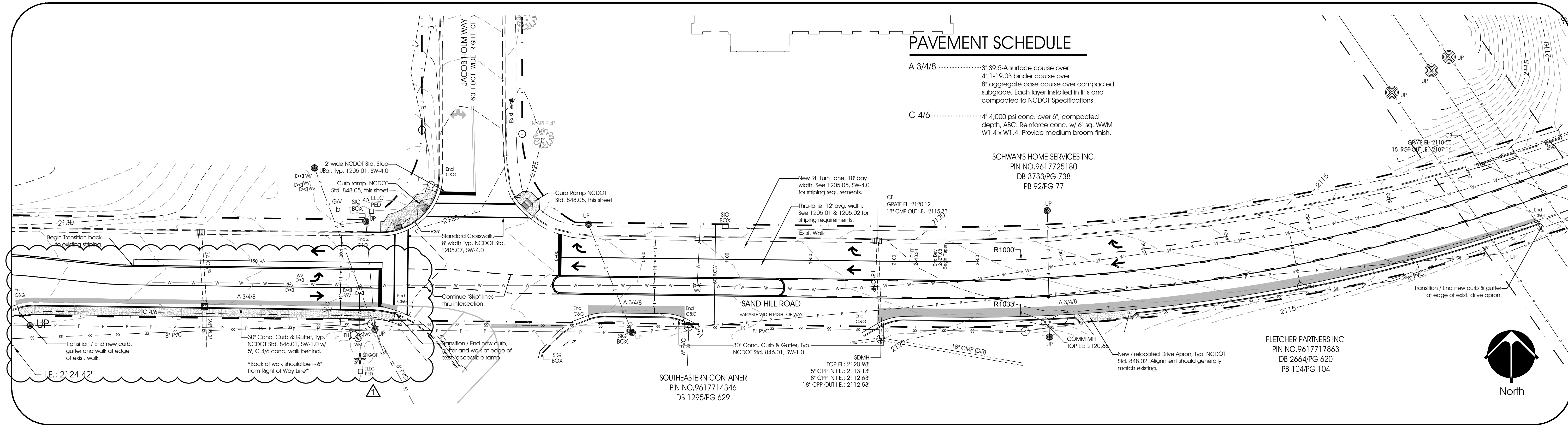
NORTH CAROLINA BOARD OF PROFESSIONAL ENGINEERS AND SURVEYORS  
 C-190

DR. DANIEL H. HATT  
 ARCHITECT

NCDOT ROADWAY IMPROVEMENTS  
 FOR ENKA INTERMEDIATE SCHOOL PROJECT  
 BUNCOMBE COUNTY SCHOOLS  
 EXISTING CONDITIONS & DEMOLITION PLAN

**SW-1.0**  
 OF 4

TURN LANE ADDITION AT SANDHILL ROAD / JACOB HOLM WAY INTERSECTION



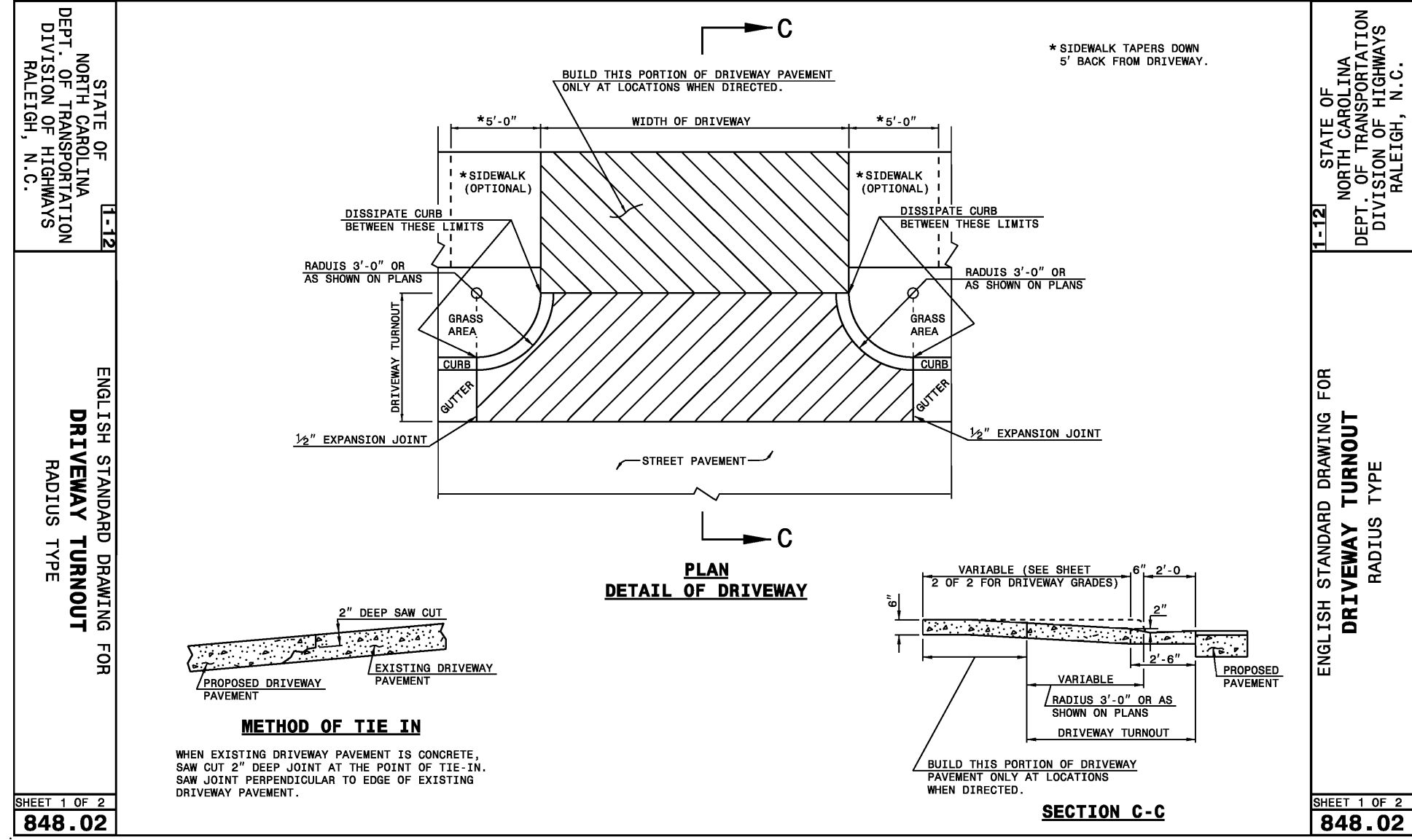
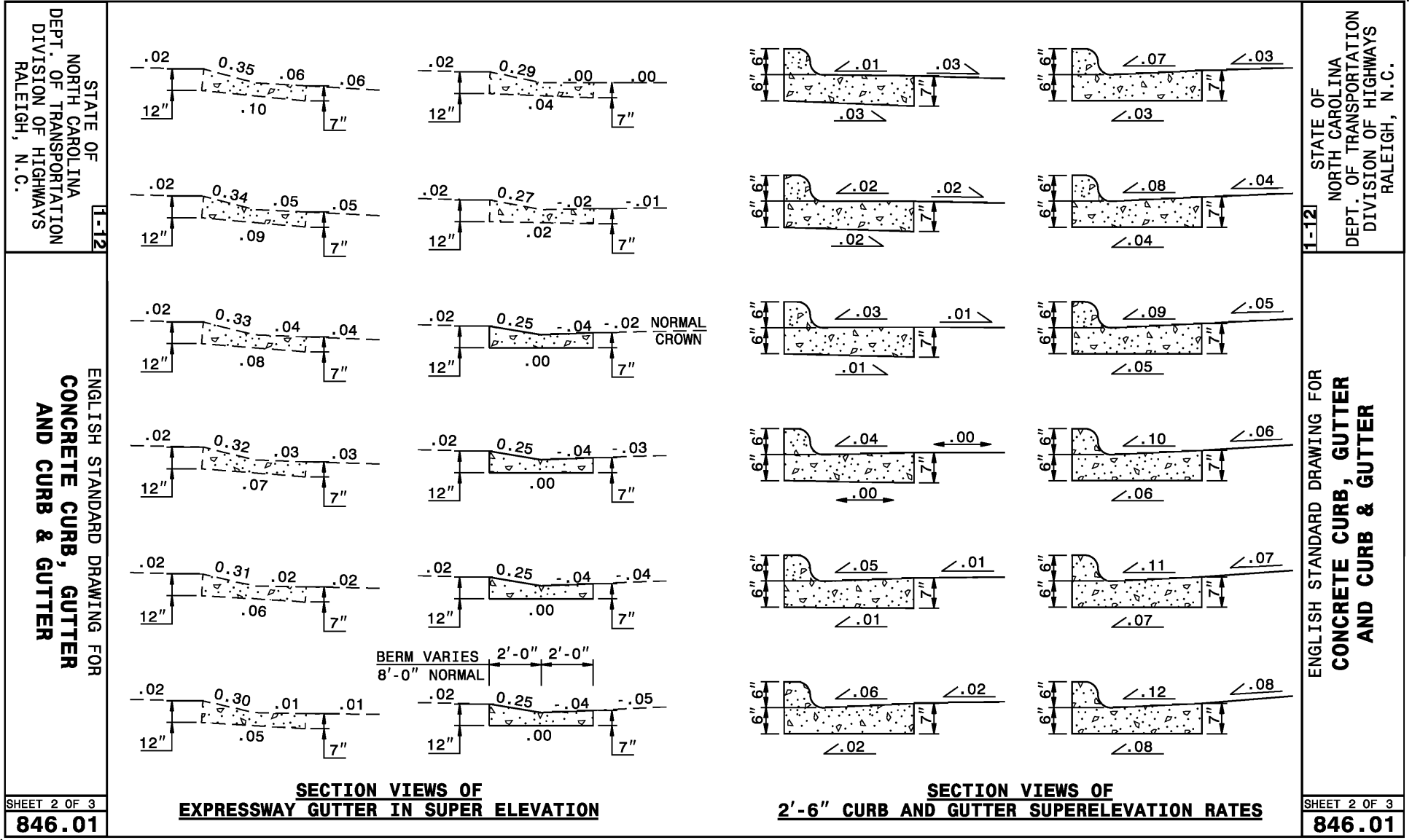
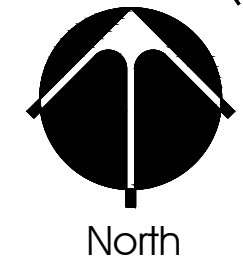
PAVEMENT SCHEDULE

- A 3/4/8 ..... 3" 99.5-A surface course over 4" 1-19.0B binder course over 8" aggregate base course over compacted subgrade. Each layer installed in lifts and compacted to NCDOT Specifications
- C 4/6 ..... 4" 4,000 psi conc. over 6", compacted depth, ABC. Reinforce conc. w/ 6" sq. WWM W1.4 x W1.4. Provide medium broom finish.

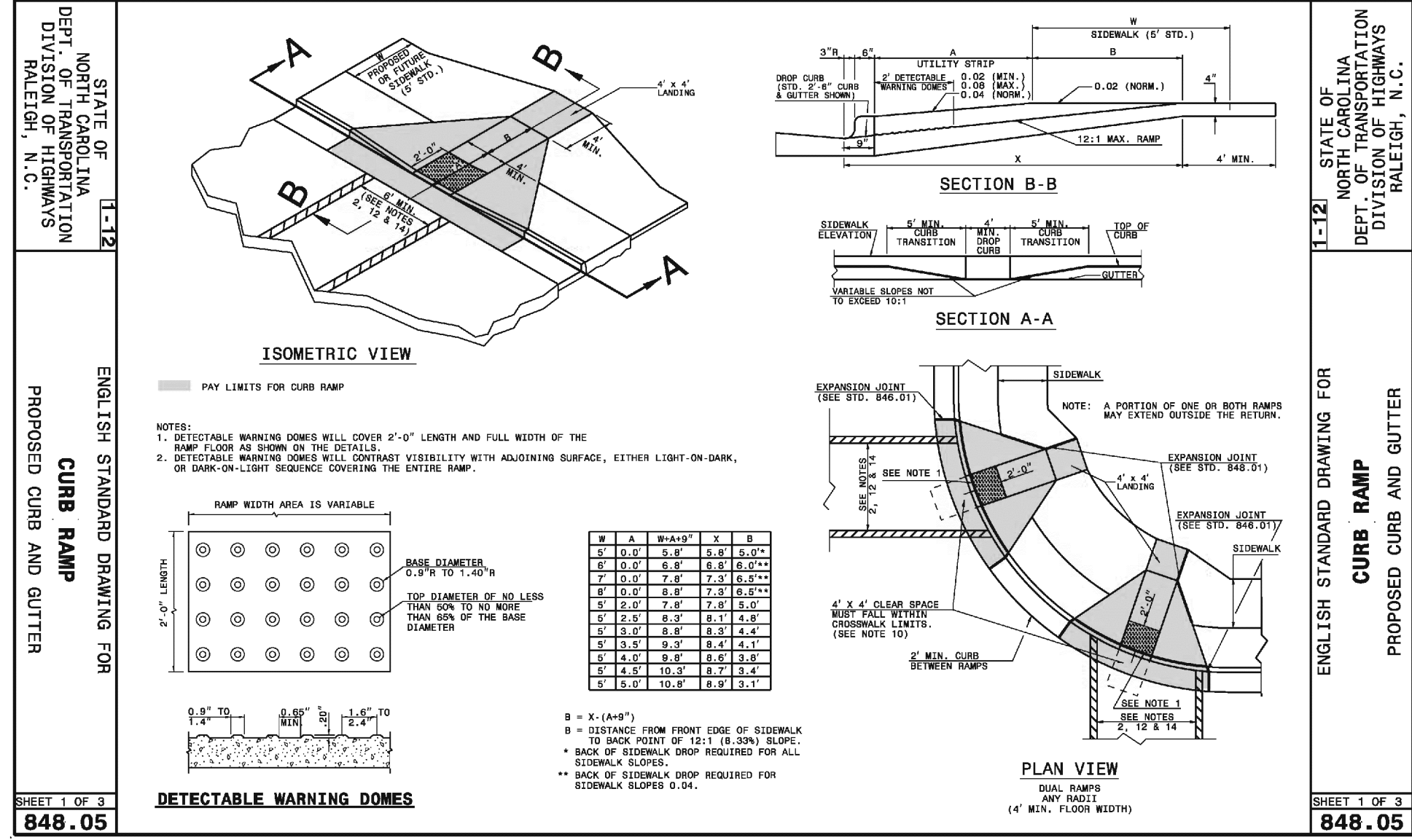
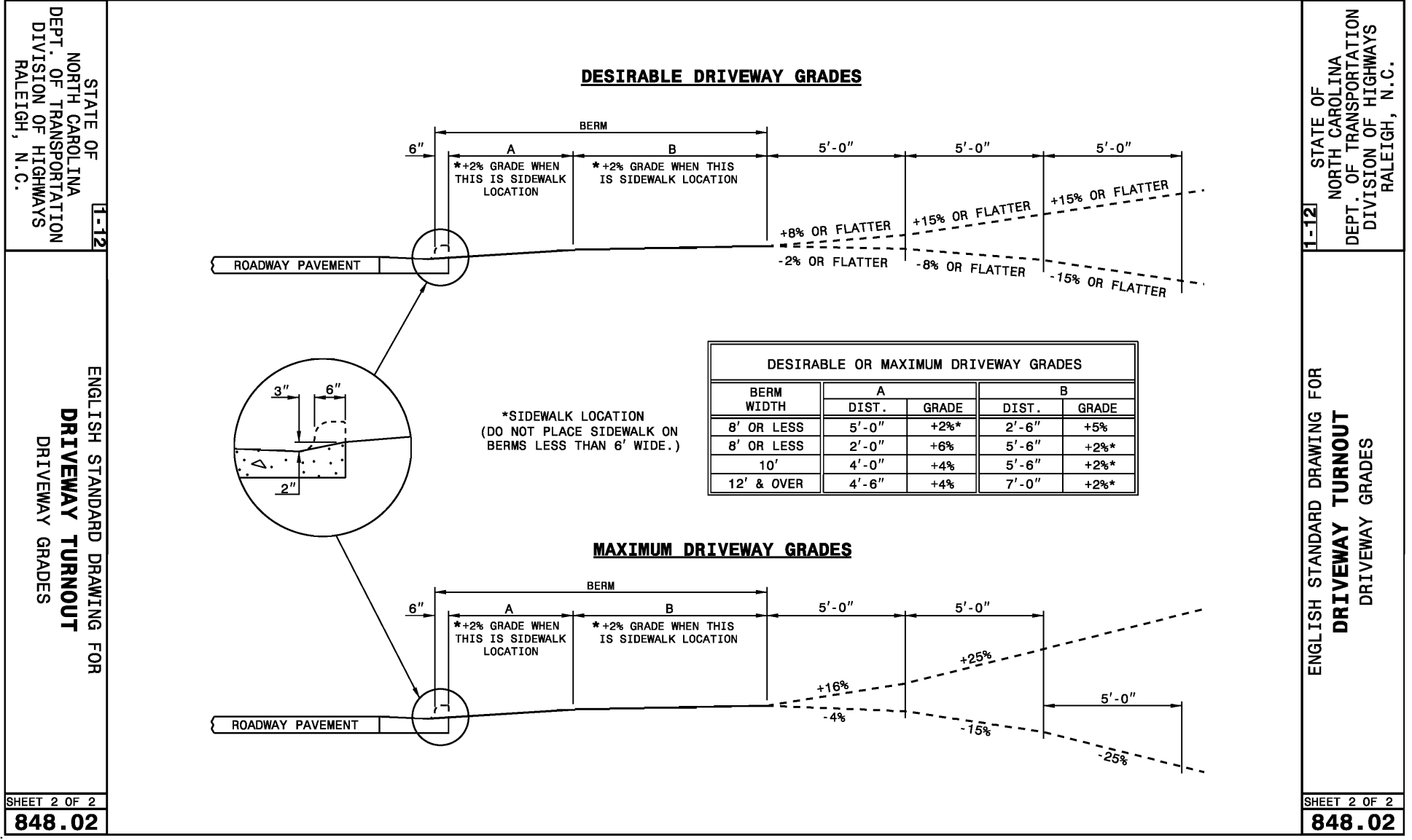
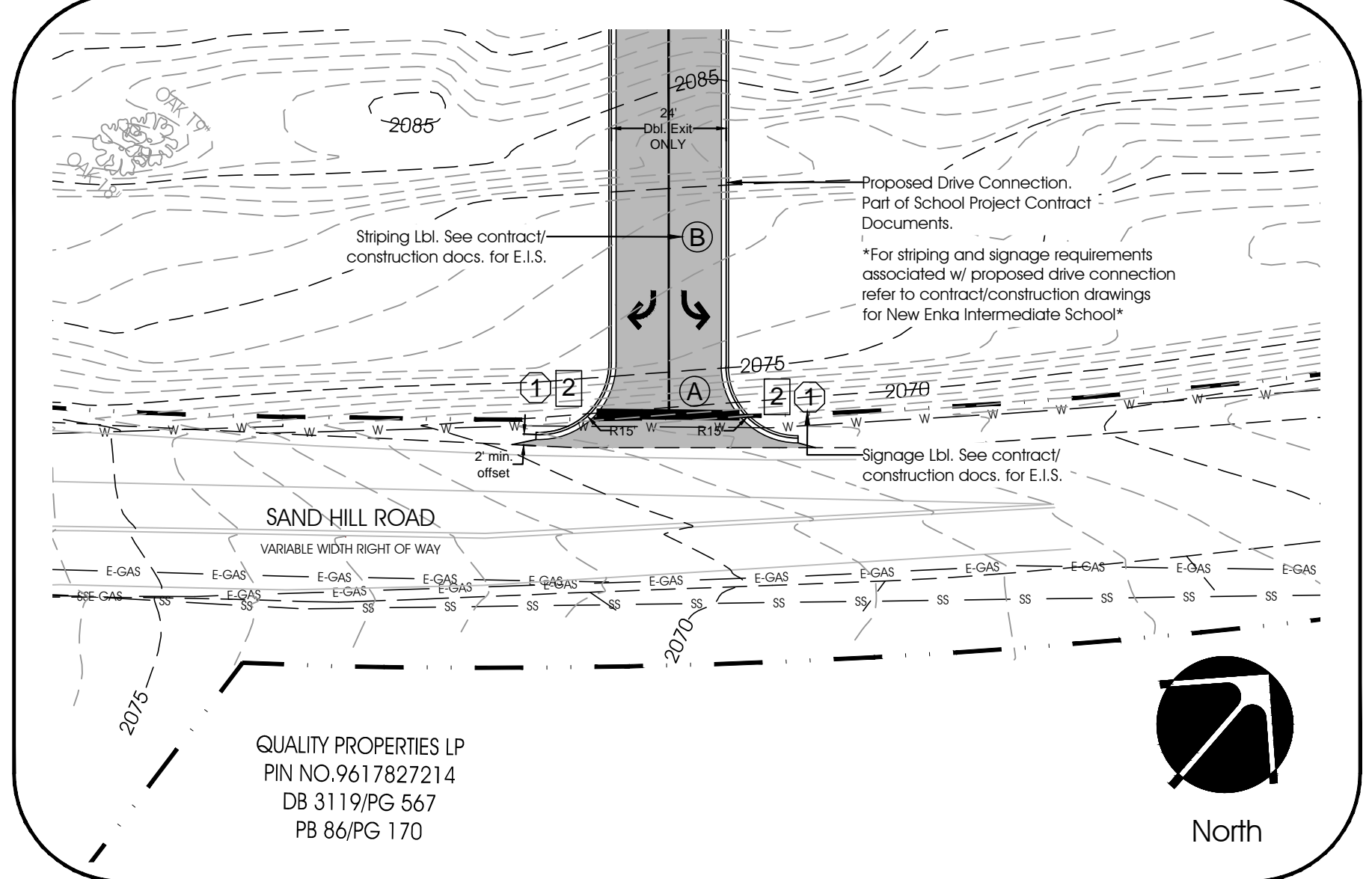
SCHWAN'S HOME SERVICES INC.  
PIN NO.9617725180  
DB 3733/PG 738  
PB 92/PG 77

FLETCHER PARTNERS INC.  
PIN NO.9617717863  
DB 2664/PG 620  
PB 104/PG 104

SOUTHEASTERN CONTAINER  
PIN NO.9617714346  
DB 1295/PG 629



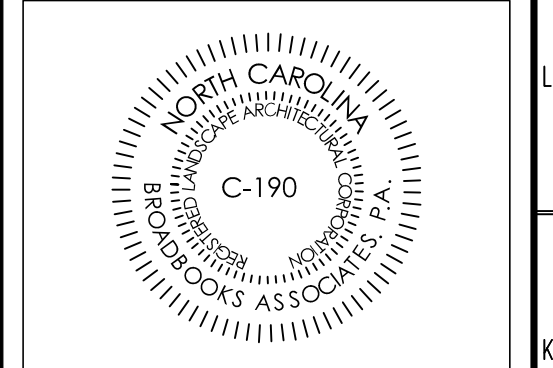
PROPOSED DRIVE CONNECTION AT SANDHILL ROAD



- NOTES:
- All dimensions are measured from edge of pavements, face of curbs and building faces unless indicated otherwise.
  - All angles are 90 deg. unless indicated otherwise.
  - Notify landscape architect of any significant discrepancies that may affect design.
  - All asphalt stipping and pavement markings shown shall be in accordance with NCDOT Stds. See SW-3.0 & 4.0. Also reference Division 12 Details and Specifications
  - Do not scale from plan.
  - All poured site concrete shall have a medium broom finish. Provide joints per NCDOT Stds.
  - All work shown in the referenced plan set shall be done in accordance with the most recent (2012) edition of the NCDOT standard details and specifications.
  - Temporary traffic controls will be required throughout construction. All traffic controls shall be provided and/or performed in accordance with NCDOT standards. Specifically, reference Division 11 details and specifications for Work Zone Traffic Control requirements.

**NOVUS**  
ASHEVILLE + CHARLESTON  
**BOWERS, ELLIS & WATSON**  
ARCHITECTS  
P: (828) 236-9992  
www.novusa.com

**BUNCOMBE COUNTY SCHOOLS**  
ELEVATING YOUNG MINDS



NCDOT ROADWAY IMPROVEMENTS  
FOR ENKA INTERMEDIATE SCHOOL PROJECT  
BUNCOMBE COUNTY SCHOOLS  
LAYOUT, PAVING AND STRIPING PLAN

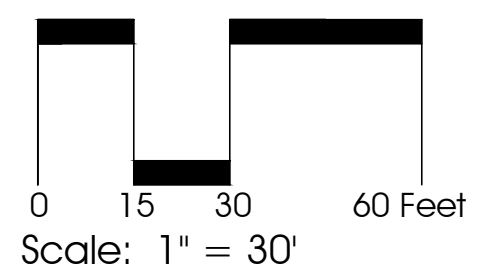
REVISIONS:

No.	Description	Date
1	Sandhill Impr. W. of Int.	05/18/16
-	-	-
-	-	-
-	-	-
-	-	-
-	-	-
-	-	-
-	-	-

DRAWN BY: R. Daniel Hyatt  
CHECKED BY: Mike Watson  
DATE: 12/17/2015  
NOVUS JOB NUMBER: ---

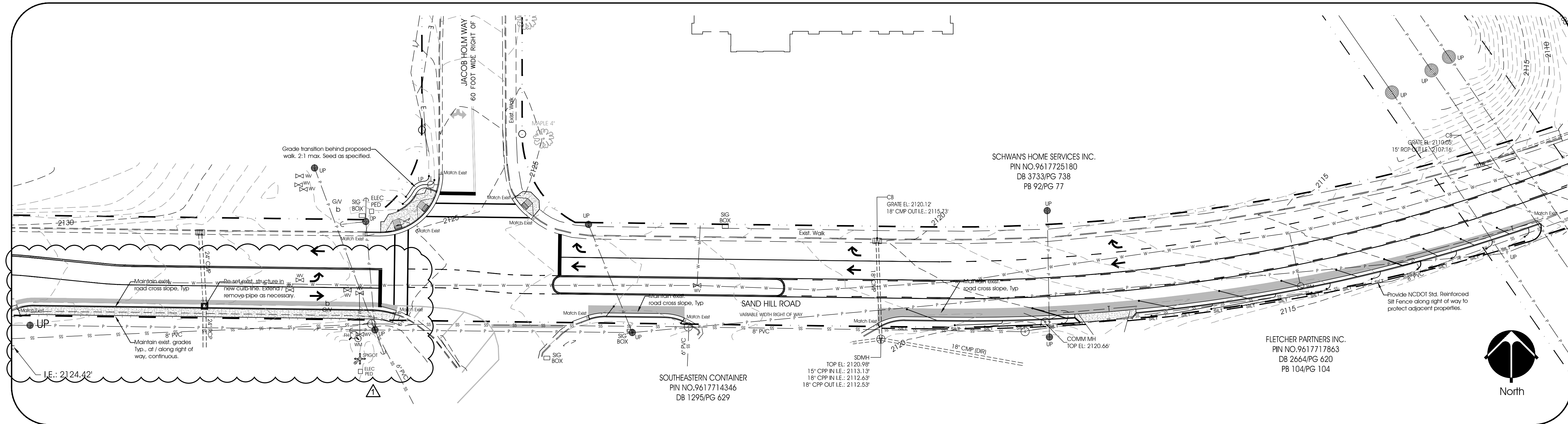
NC ONE-CALL  
CALL BEFORE YOU DIG  
1-800-632-4949

**roadbooks** Associates, P.A.  
104 E. Chestnut St., Suite 1  
Asheville, NC 28801  
PH: 828-252-5591  
FAX: 828-454-9536



**SW-2.0**  
OF 4

# TURN LANE ADDITION AT SANDHILL ROAD / JACOB HOLM WAY INTERSECTION



**NOVUS**  
ASHEVILLE + CHARLESTON  
**BOWERS, ELLIS & WATSON**  
ARCHITECTS

P: (828) 236-9992  
www.novusa.com

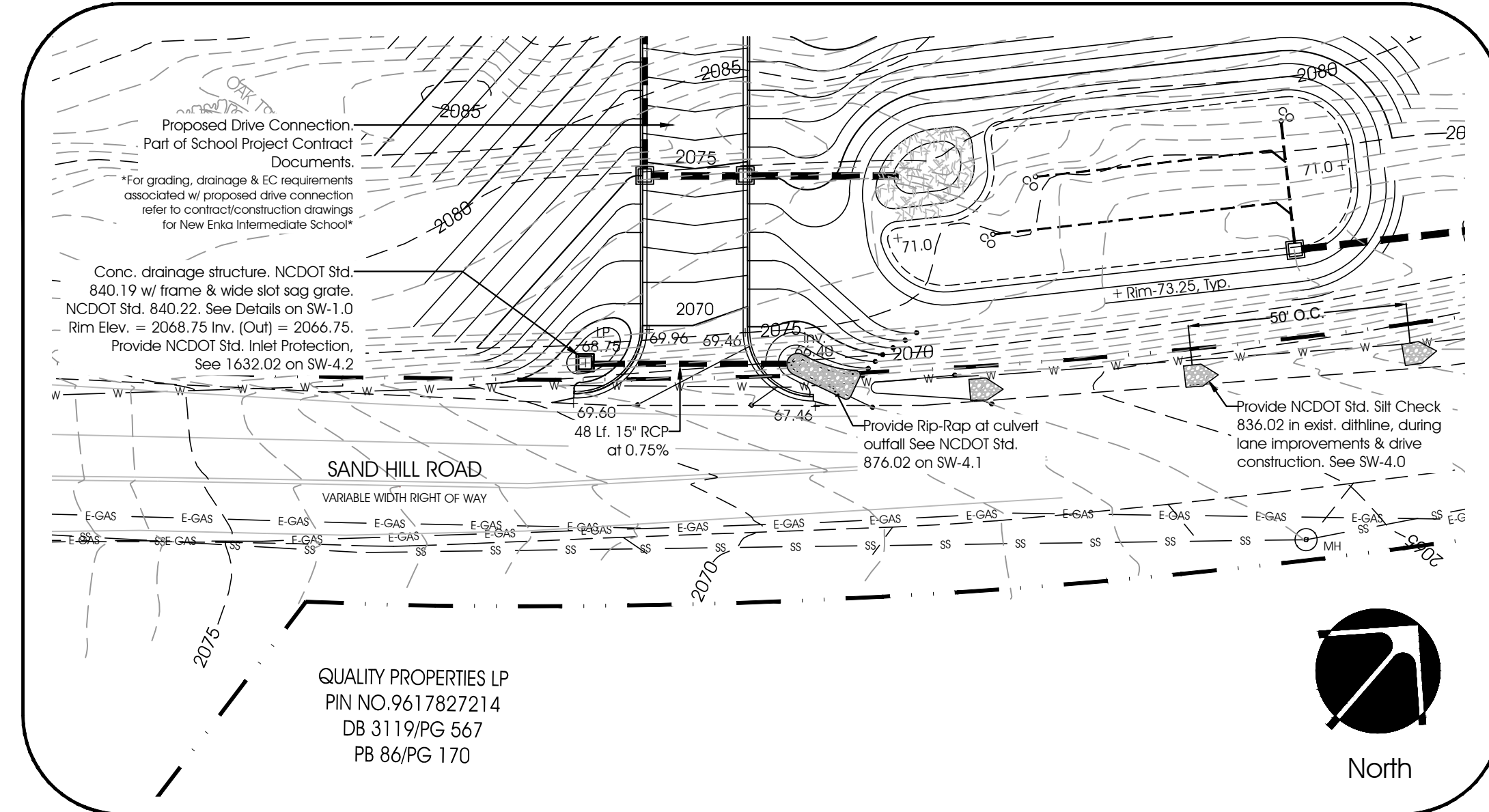
168 PATTON AVE.  
ASHEVILLE, NC 28801

**BUNCOMBE COUNTY SCHOOLS**  
ELEVATING YOUNG MINDS

NORTH CAROLINA  
REGISTERED PROFESSIONAL  
ENGINEERS ASSOCIATION  
C-190

NORTH CAROLINA  
REGISTERED PROFESSIONAL  
SURVEYORS  
DANIEL HYATT

## PROPOSED DRIVE CONNECTION AT SANDHILL ROAD



STATE OF NORTH CAROLINA  
DEPT. OF TRANSPORTATION  
DIVISION OF HIGHWAYS  
RALEIGH, N.C.

ENGLISH STANDARD DRAWING FOR  
**CURB RAMP**  
PROPOSED CURB AND GUTTER

ENGLISH STANDARD DRAWING FOR  
**CURB RAMP**  
PROPOSED CURB AND GUTTER

848.05

STATE OF NORTH CAROLINA  
DEPT. OF TRANSPORTATION  
DIVISION OF HIGHWAYS  
RALEIGH, N.C.

ENGLISH STANDARD DRAWING FOR  
**CURB RAMPS**  
NOTES

ENGLISH STANDARD DRAWING FOR  
**CURB RAMPS**  
NOTES

848.05

NOTES:

- CONSTRUCT THE RAMP SURFACE TO BE STABLE, FIRM, AND SLIP RESISTANT. CONSTRUCT THE CURB RAMP TYPE AS SHOWN IN THE PAVEMENT MARKING PLANS OR AS DIRECTED BY THE ENGINEER.
- LOCATE CURB RAMPS AND PLACE PEDESTRIAN CROSSWALK MARKINGS AS SHOWN IN THE PAVEMENT MARKING PLANS. WHEN FIELD ADJUSTMENTS REQUIRE MOVING CURB RAMPS OR MARKINGS AS SHOWN, CONTACT THE SIGNING AND DELINEATION UNIT OR LOCATE AS DIRECTED BY THE ENGINEER.
- COORDINATE THE CURB RAMP AND THE PEDESTRIAN CROSSWALK MARKINGS SO A 4'x4' CLEAR SPACE AT THE BASE OF THE CURB RAMP WILL FALL WITHIN THE PEDESTRIAN CROSSWALK LINES.
- SET BACK DISTANCE FROM INSIDE CROSSWALK MARKING TO NEAREST EDGE OF TRAVEL LANE IS 4' MINIMUM.
- REFER TO THE PAVEMENT MARKING PLANS FOR STOP BAR LOCATIONS AT SIGNALIZED INTERSECTIONS. IF A PAVEMENT MARKING PLAN IS NOT PROVIDED, CONTACT THE SIGNAL DESIGN SECTION FOR THE STOP BAR LOCATIONS OR LOCATE AS DIRECTED BY THE ENGINEER.
- TERMINATE PARKING A MINIMUM OF 20' BACK OF A PEDESTRIAN CROSSWALK.
- CONSTRUCT CURB RAMPS A MINIMUM OF 4' WIDE.
- CONSTRUCT THE RUNNING SLOPE OF THE RAMP 0.33% MAXIMUM.
- ALLOWABLE CROSS SLOPE ON SIDEWALKS AND CURB RAMPS WILL BE 2% MAXIMUM.
- CONSTRUCT THE SIDE FLARE SLOPE A MAXIMUM OF 10% MEASURED ALONG THE CURB LINE.
- CONSTRUCT THE COUNTER SLOPE OF THE GUTTER OR STREET AT THE BASE OF THE CURB RAMP A MAXIMUM OF 5% AND MAINTAIN A SMOOTH TRANSITION.
- CONSTRUCT LANDINGS FOR SIDEWALK A MINIMUM OF 4'x4' WITH A MAXIMUM SLOPE OF 2% IN ANY DIRECTION. CONSTRUCT LANDINGS FOR MEDIAN ISLANDS A MINIMUM OF 5'x5' WITH A MAXIMUM SLOPE OF 2% IN ANY DIRECTION.
- TO USE A MEDIAN ISLAND AS A PEDESTRIAN REFUGE AREA, MEDIAN ISLANDS WILL BE A MINIMUM OF 6' WIDE. CONSTRUCT MEDIAN ISLANDS TO PROVIDE PASSAGE OVER OR THROUGH THE ISLAND.
- SMALL CHANNELIZATION ISLANDS THAT CAN NOT PROVIDE A 5'x5' LANDING AT THE TOP OF A RAMP, WILL BE CUT THROUGH LEVEL WITH THE SURFACE STREET.
- CURB RAMPS WITH RETURNED CURBS MAY BE USED ONLY WHERE PEDESTRIANS WOULD NOT NORMALLY WALK ACROSS THE RAMP. THE ADJACENT SURFACE IS PLANTING OR OTHER NON-WALKING SURFACE OR THE SIDE APPROACH IS SUBSTANTIALLY OBSTRUCTED.
- PLACE A 1/2" EXPANSION JOINT WHERE THE CONCRETE CURB RAMP JOINS THE CURB AS SHOWN IN ROADWAY STANDARD DRAWING 848.01
- PLACE ALL PEDESTRIAN PUSH BUTTON ACTUATORS AND CROSSING SIGNALS AS SHOWN IN THE PLANS OR AS SHOWN IN THE MUTCD.
- CURB RAMPS THROUGH MEDIAN ISLANDS, SINGLE RAMPS AT DUAL CROSSWALKS OR LIMITED R/W SITUATIONS, WILL BE HANDLED BY SPECIAL DETAILS. CONTACT THE CONTRACT STANDARDS AND DEVELOPMENT UNIT FOR THE DETAILS OR FOR A SPECIAL DESIGN.

## SEEDING SCHEDULE

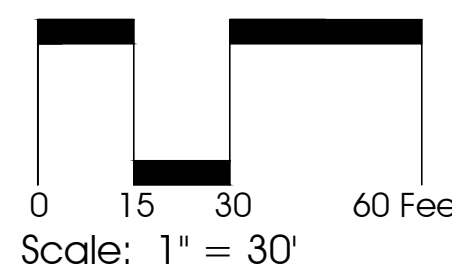
Temporary Seeding - Winter & Early Spring	Permanent Seeding - Cut & Fill Slopes	Permanent Seeding - Lawn Areas < 4:1
<p>Seed Mixture: Rye (grain) @ 120 lbs. / acre Korean Lespedeza @ 50 lbs. / acre</p> <p>Dates: Feb. 1st thru May 1st</p> <p>Soil Amendments: follow recommendations of soil test or apply 2,000 lb/acre ground agricultural limestone and 750 lb/acre. 10-10-10.</p> <p>Mulch: Apply 1.5 to 2 bales grain straw per 1,000 sq.ft. Anchor by tacking with asphalt, netting, or a mulch anchoring tool.</p>	<p>Seed Mixture: Tall Fescue @ 100 lbs. / acre Sericea Lespedeza @ 20 lbs. / acre Korean Lespedeza @ 10 lbs. / acre RecTop @ 5 lbs. / acre Kentucky Bluegrass @ 5 lbs. / acre</p> <p>Dates: March. 1st thru May 15th &amp; July 15th thru Sept. 15th</p> <p>Soil Amendments: follow recommendations of soil test or apply 2,000 lb/acre ground agricultural limestone and 800 lb/acre. 16-04-08.</p> <p>Mulch: Apply 1.5 to 2 bales grain straw per 1,000 sq.ft. or equiv. mulching product. Anchor by tacking with asphalt, netting, or a mulch anchoring tool.</p>	<p>Seed Mixture: 50%-50% mixture of two turf type tall fescues @ 200 lbs. / acre 50%-50% mixture of two improved bluegrass varieties @ 50 lbs. / acre</p> <p>Dates: July 25th thru Sept. 15th &amp; March 1st thru May 15th</p> <p>Soil Amendments: follow recommendations of soil test or apply 2,000 lb/acre ground agricultural limestone and 1,200 lb/acre. 16-04-08.</p> <p>Mulch: Apply 1.5 to 2 bales grain straw per 1,000 sq.ft. or equiv. mulching product. Anchor by tacking with asphalt, netting, or a mulch anchoring tool.</p>

NC ONE-CALL  
CALL BEFORE YOU DIG  
1-800-632-4949

**Broadbooks Associates** P.C.  
1104 E. Chestnut St., Suite 1  
Asheville, NC 28801  
PH: 828-252-5281  
FAX: 828-252-1102

492 S. Main St., Suite 8  
Asheville, NC 28801  
PH: 828-454-9536

www.broadbooksapa.com



NCDOT ROADWAY IMPROVEMENTS  
FOR ENKA INTERMEDIATE SCHOOL PROJECT  
BUNCOMBE COUNTY SCHOOLS

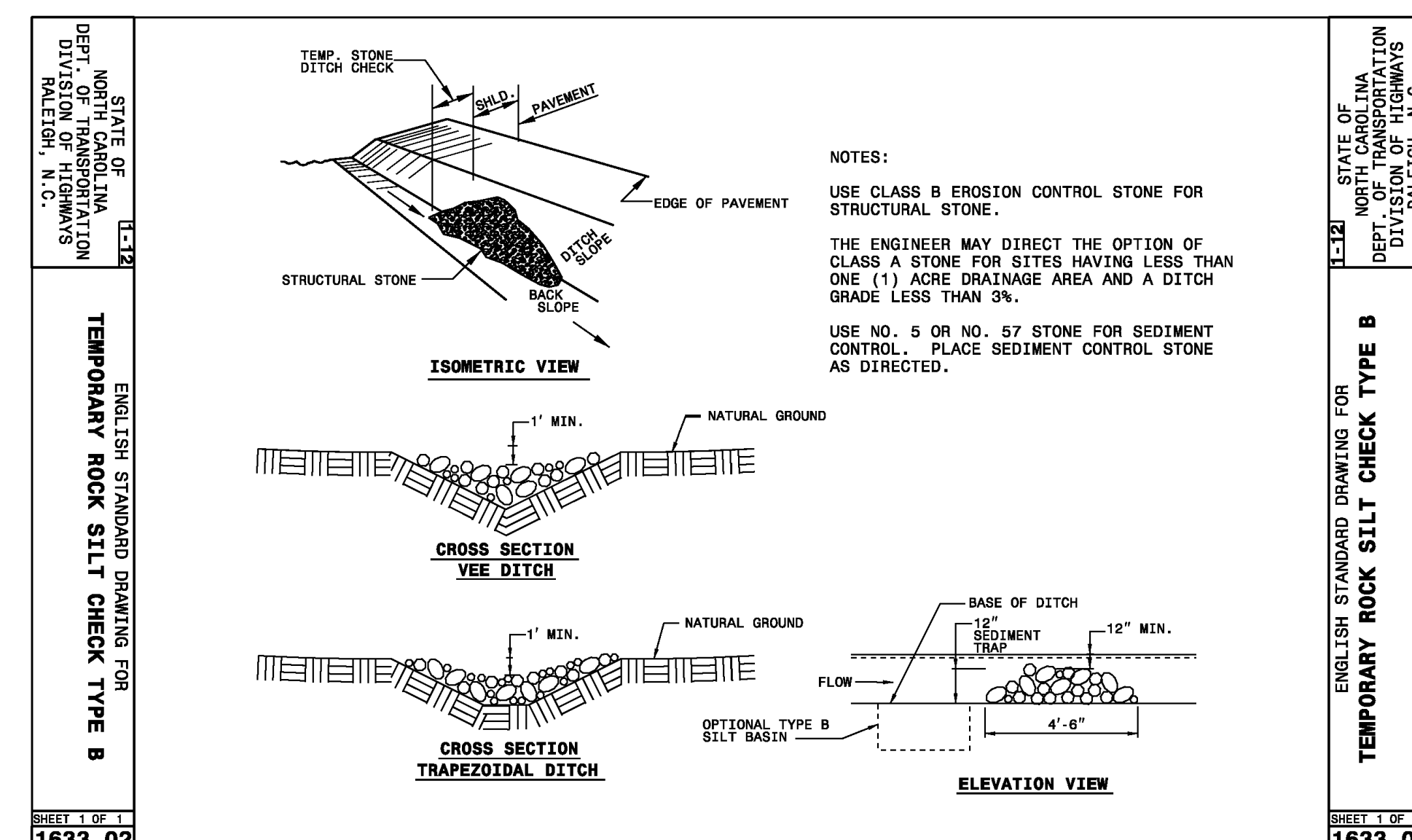
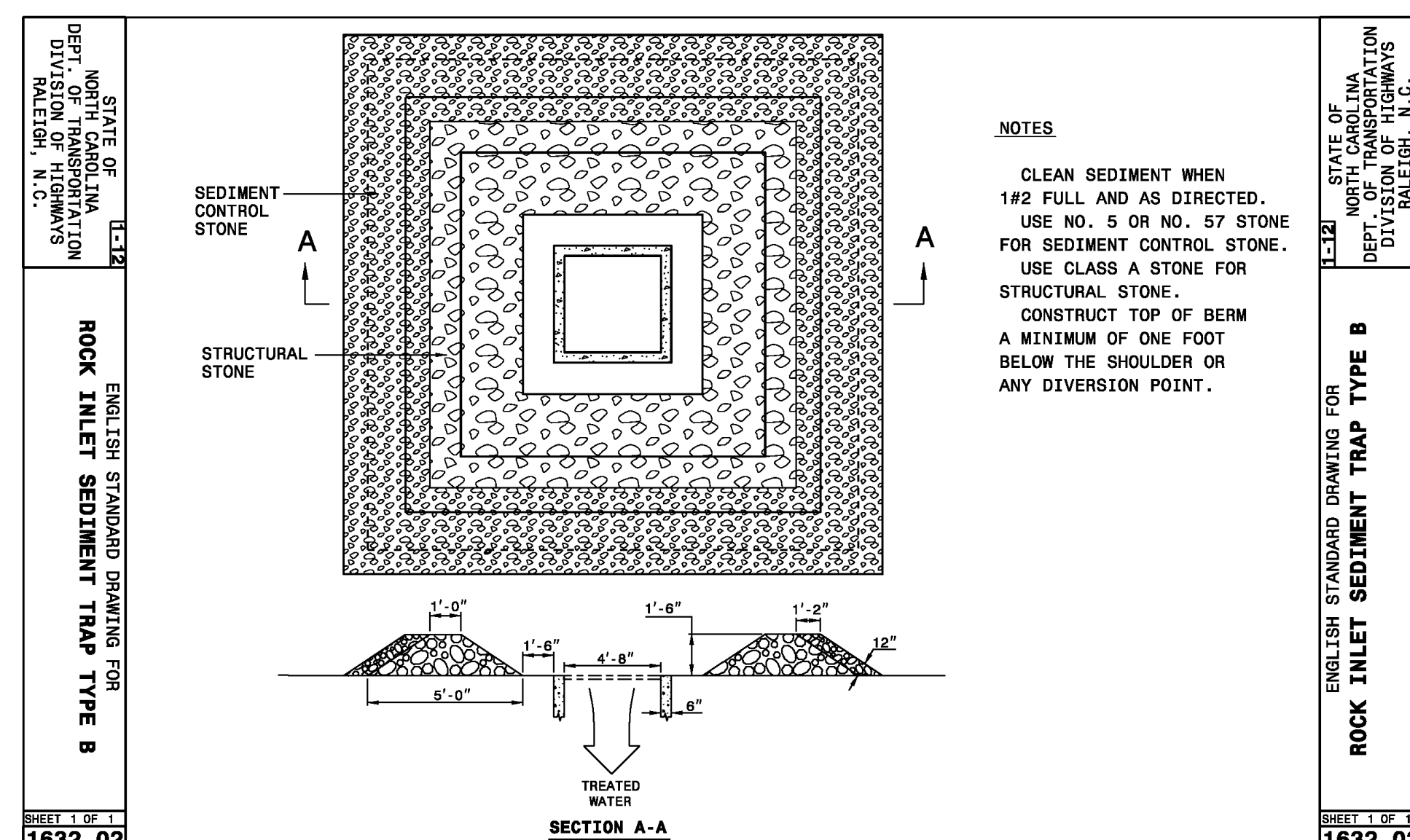
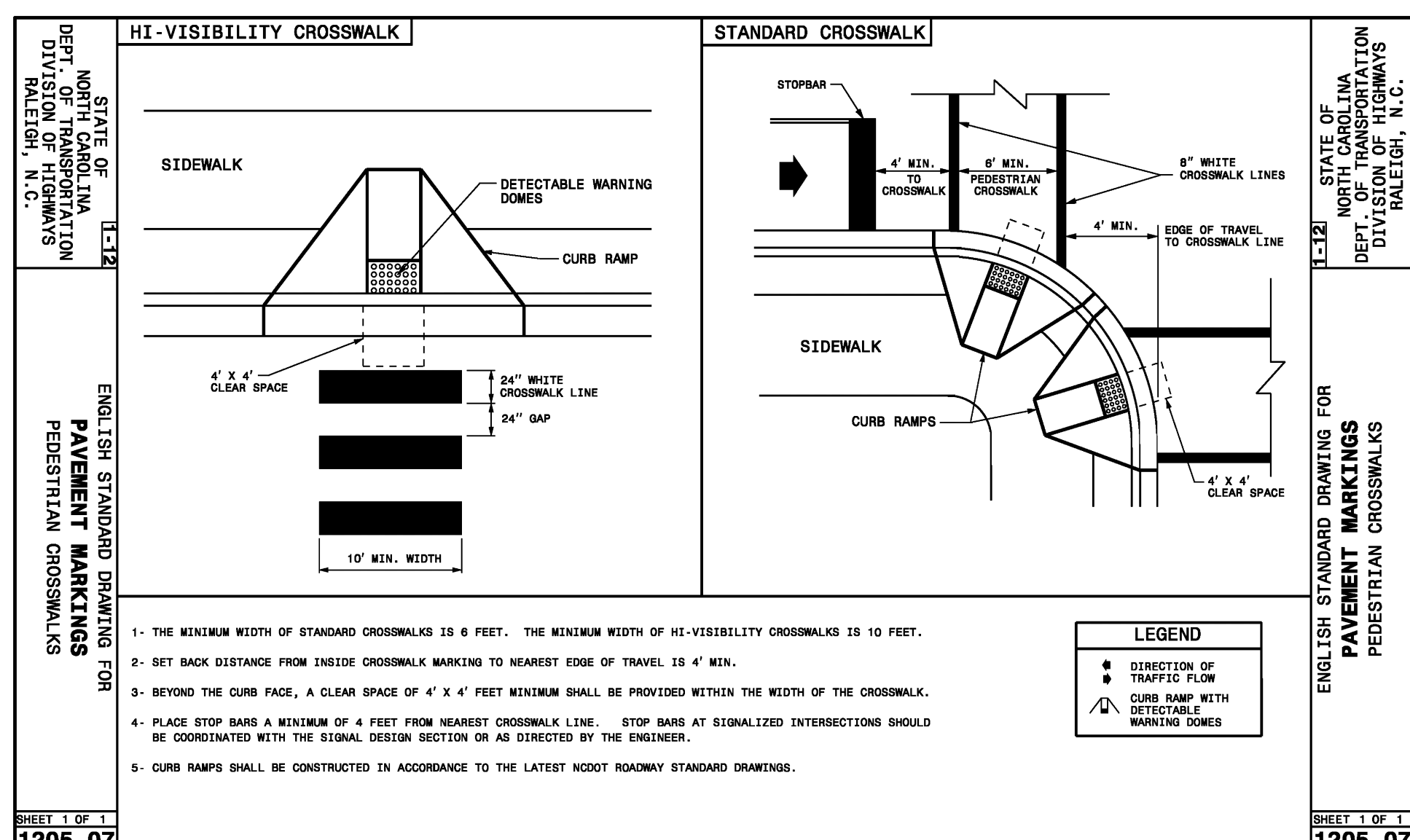
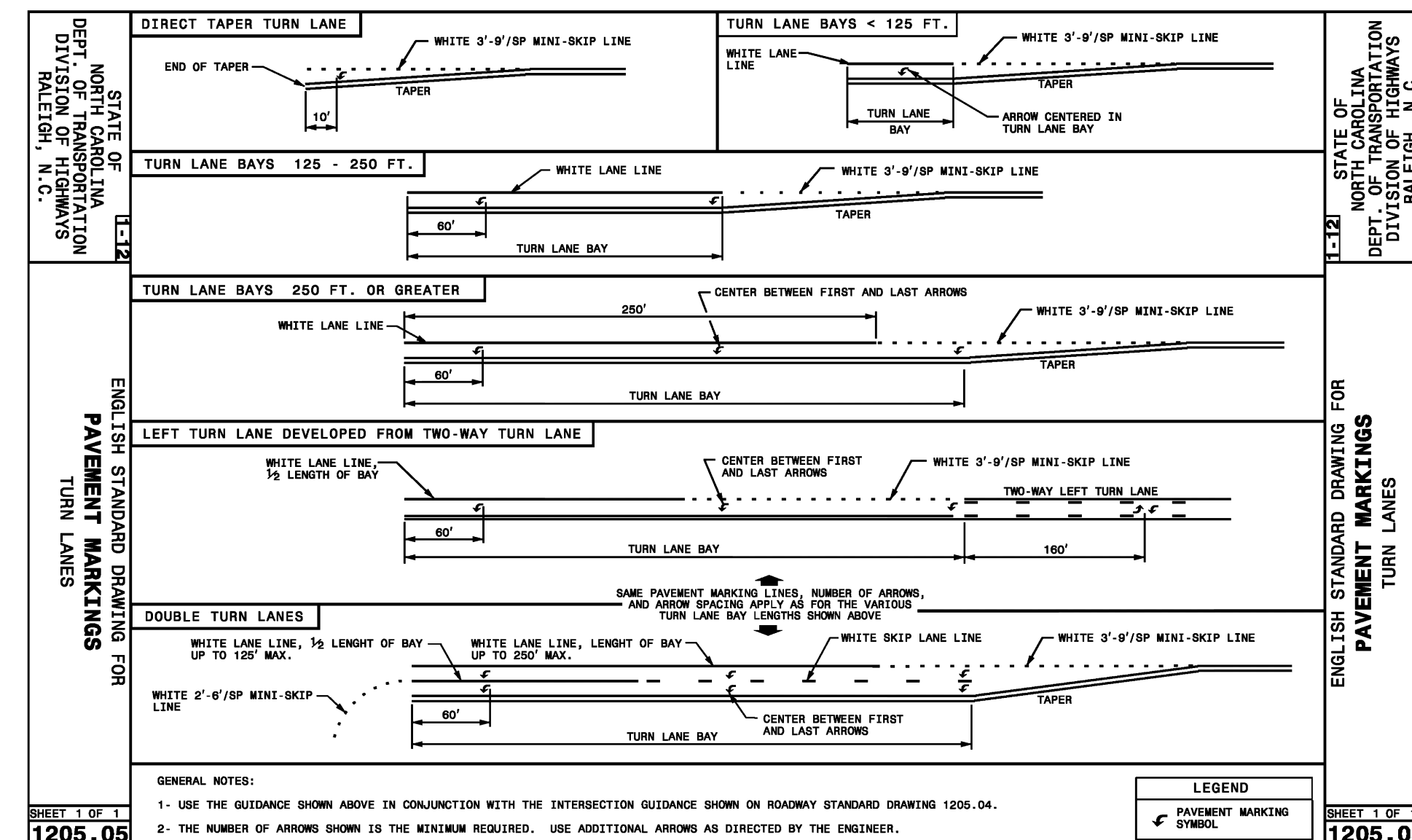
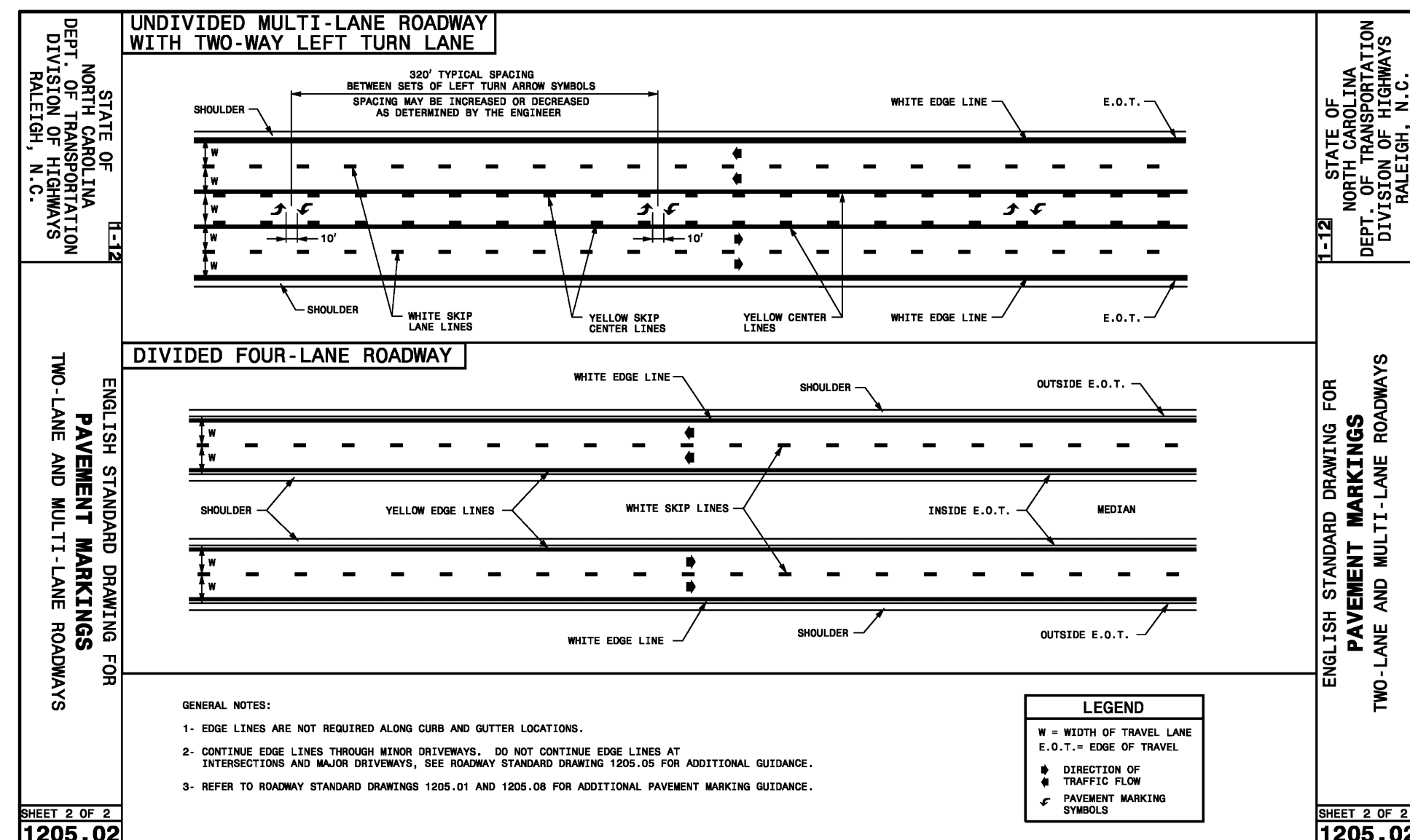
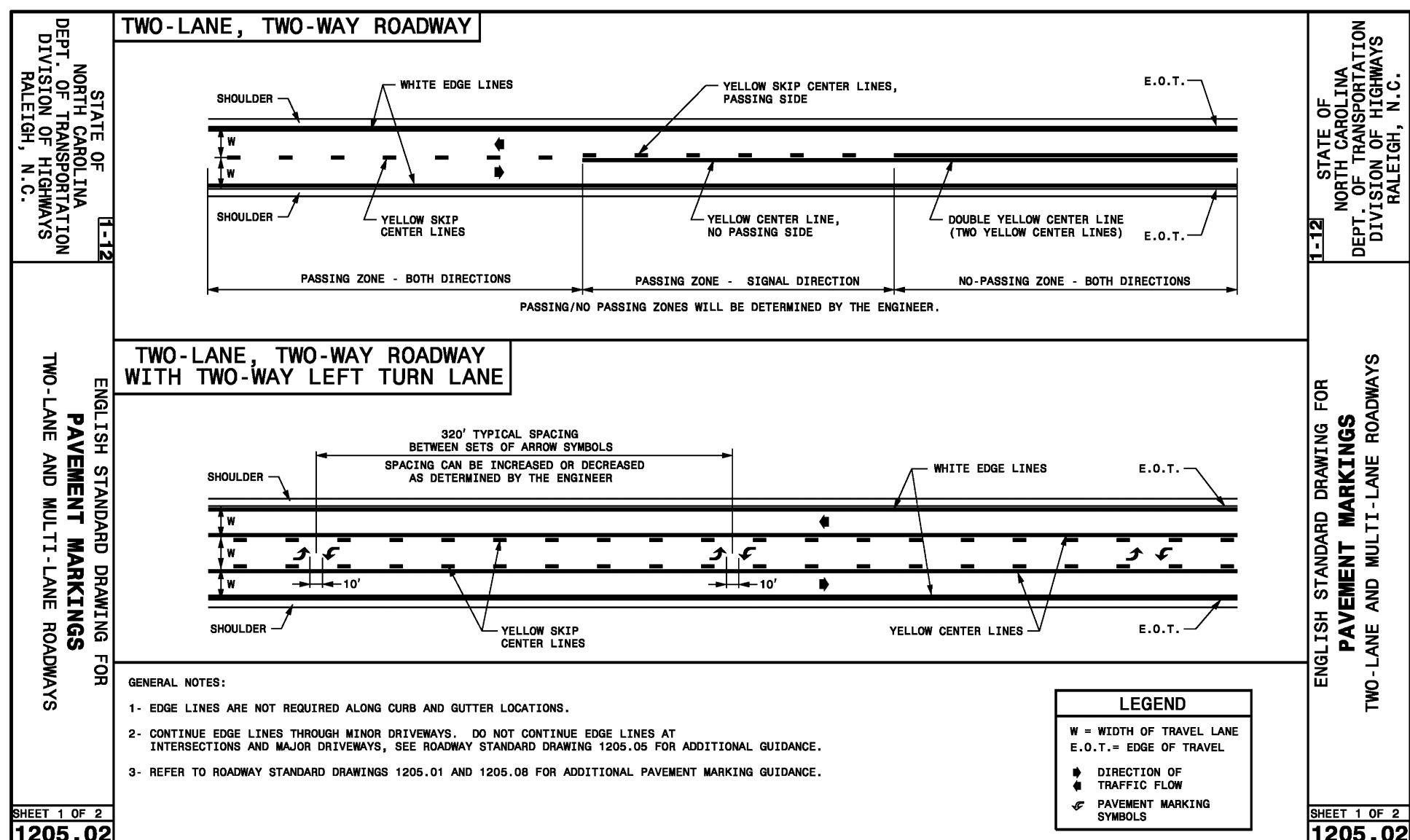
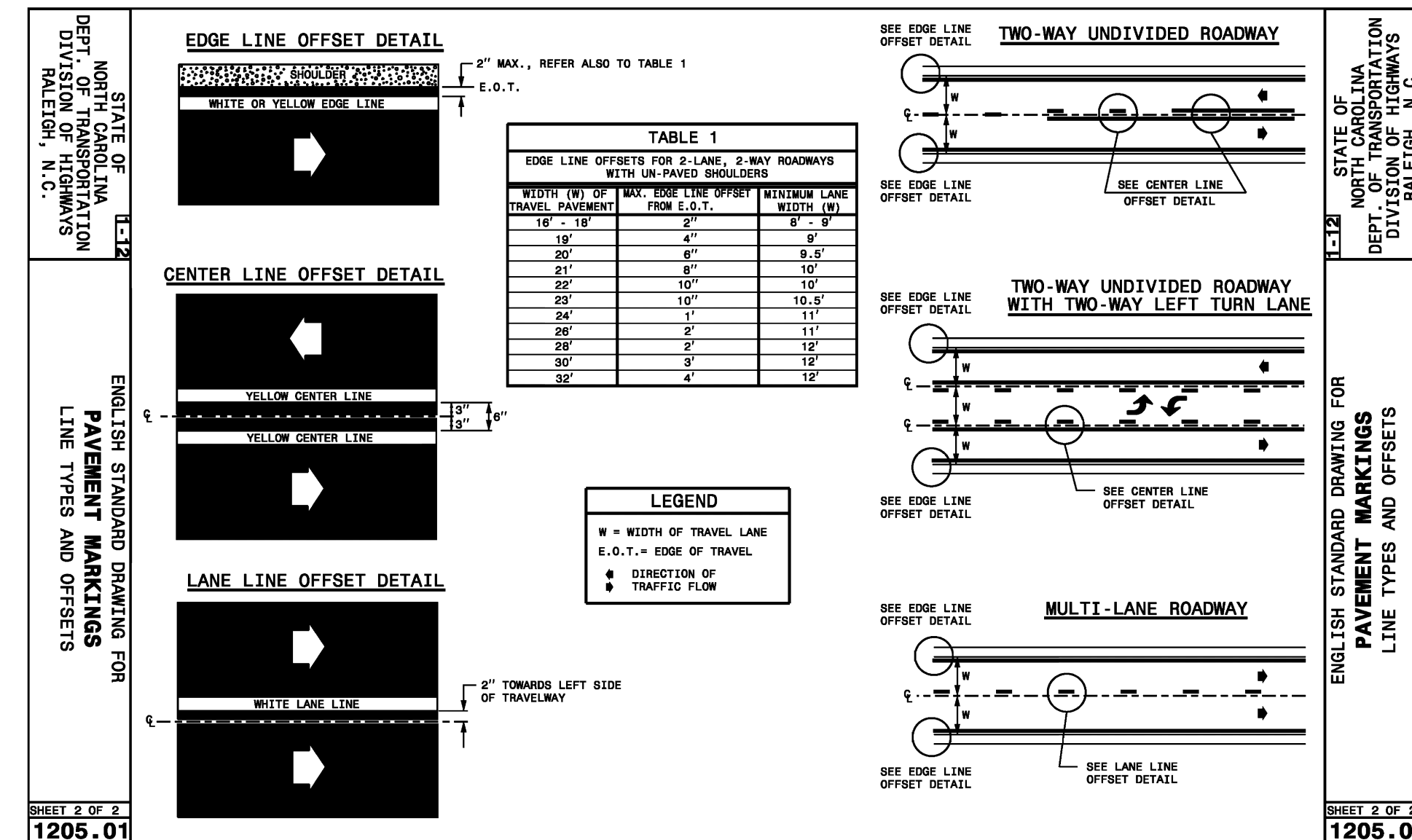
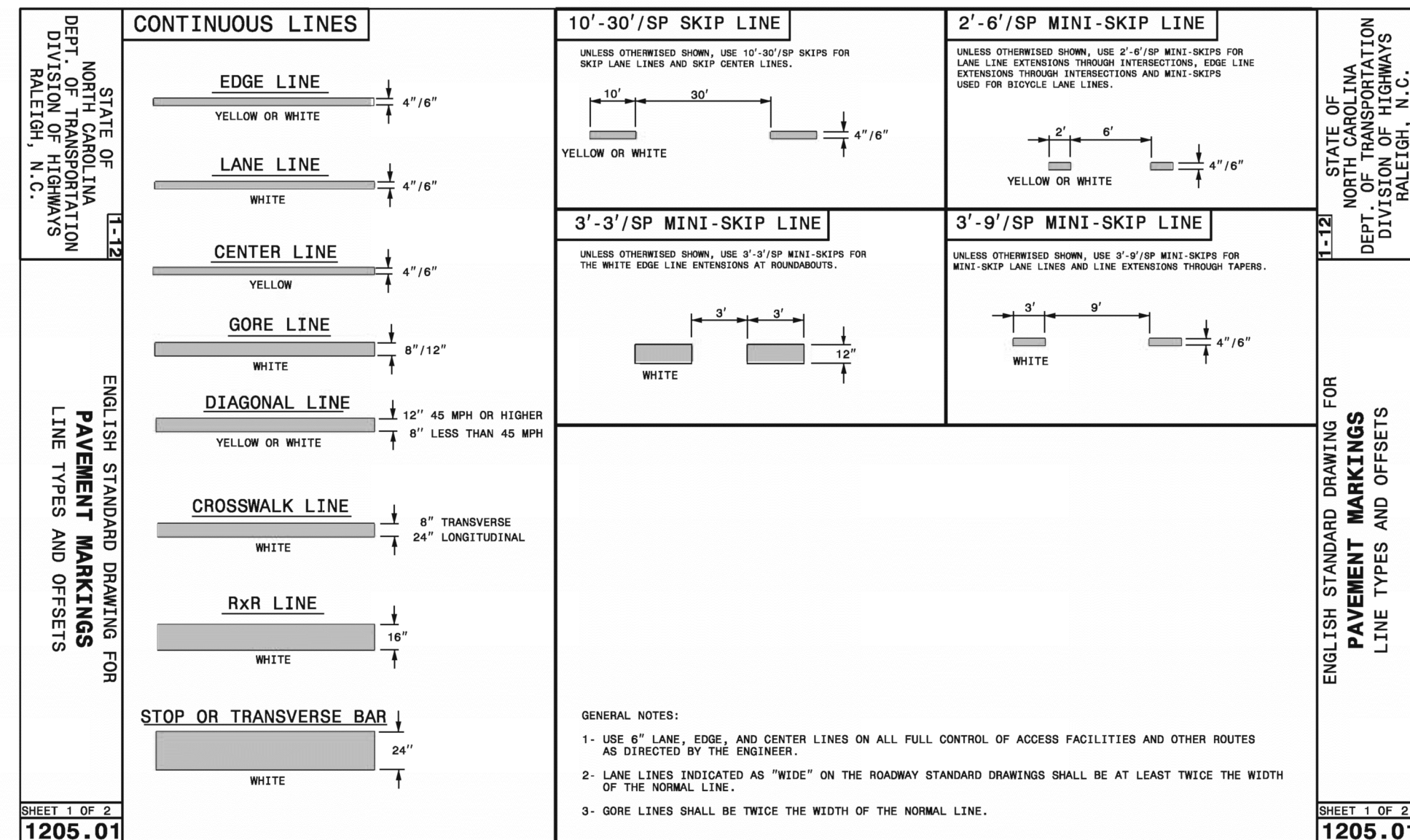
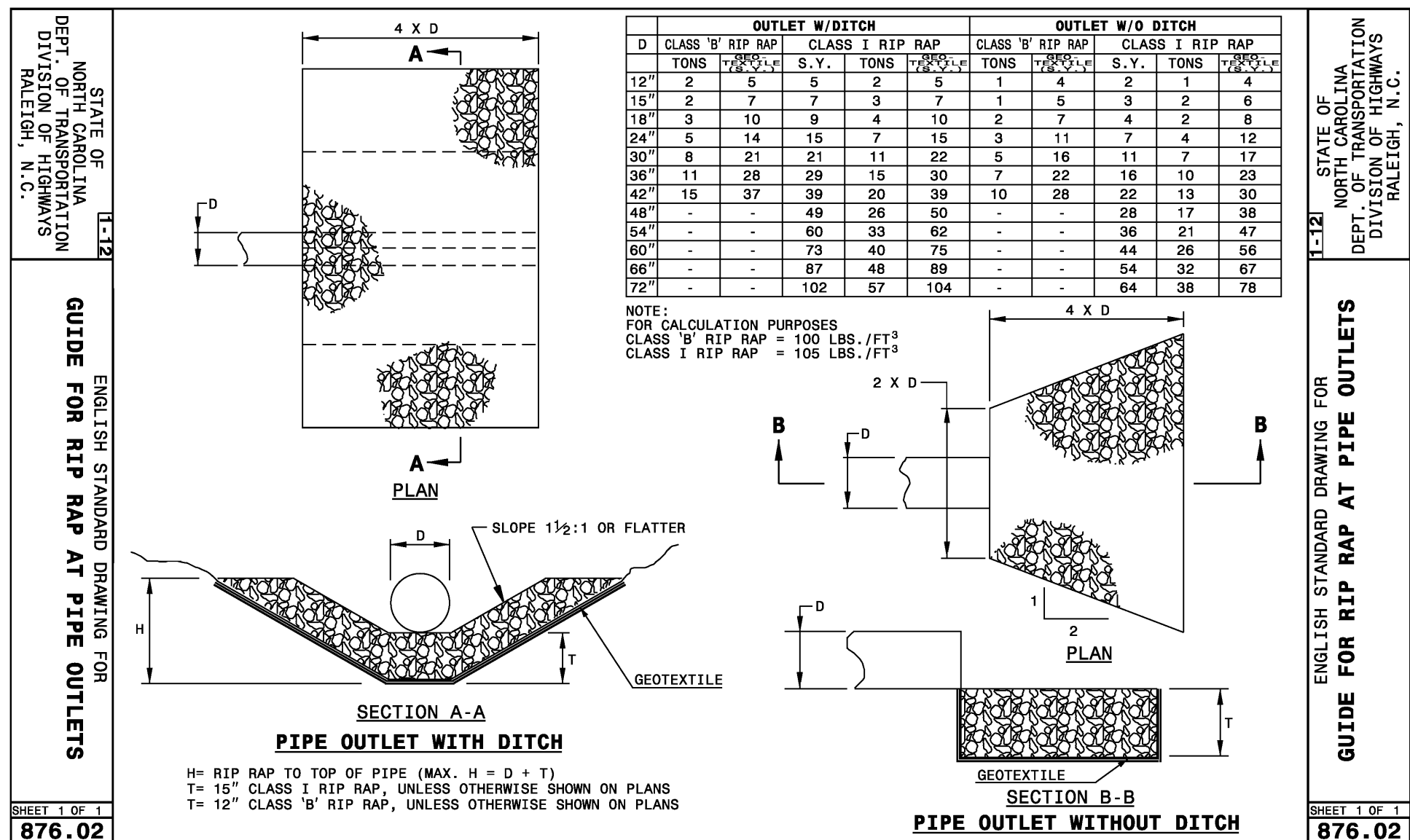
GRADING AND EROSION CONTROL PLAN

REVISIONS:  $\Delta$

No.	Description	Date
1	Sandhill Impr. W. of Int.	05/18/16
-	-	-
-	-	-
-	-	-
-	-	-
-	-	-

DRAWN BY: R. Daniel Hyatt  
CHECKED BY: Mike Watson  
DATE: 12/17/2015  
NOVUS JOB NUMBER: ---

**SW-3.0**  
OF 4

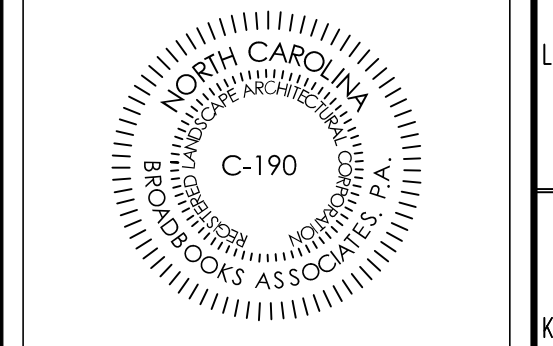


**NOVUS**  
ASHEVILLE + CHARLESTON  
**BOWERS, ELLIS & WATSON**  
ARCHITECTS

P: (828) 236-9992  
www.novusgs.com

**BUNCOMBE COUNTY SCHOOLS**

ELEVATING YOUNG MINDS



NCDOT ROADWAY IMPROVEMENTS  
FOR ENKA INTERMEDIATE SCHOOL PROJECT  
BUNCOMBE COUNTY SCHOOLS

CONSTRUCTION DETAILS 1 of 3

REVISIONS:

No.	Description	Date

DRAWN BY: R. Daniel Hyatt  
CHECKED BY: Mike Watson  
DATE: 12/17/2015

**SW-4.0**  
OF 4

**Broadbooks Associates** P.C.  
104 E. Chestnut St., Suite 1  
Asheville, NC 28801  
PH: 828-252-5291  
FAX: 828-454-9539